

VICINITY MAP

NOT WITHIN
SANITATION
DISTRICT

- DEEP CREEK LAKE SURVEY DATA
- HORIZONTAL DATUM = LAMBERT NAD 83 DATUM
HORIZONTAL DATUM = FIELD OBSERVATION X COMBINED SCALE FACTOR
NAD 83 DATUM = FIELD OBSERVATION X COMBINED SCALE FACTOR
COMBINED SCALE FACTOR = GRID SCALE FACTOR X ELEVATION SCALE FACTOR
APPROXIMATE COMBINED SCALE FACTOR = 0.999989
 - VERTICAL DATUM = LAKE DATUM
LAKE DATUM = NAVD 88 DATUM - 1.80 FT.

SURVEY CALLS

CONC.MON.	BEARING	DISTANCE
N752-N753	S 47°25' W	211.58'
N753-N754	N 82°35' W	295.54'
N754-N518	S 58°58' W	374.56'
N518-N755	S 33°24' W	544.95'
N755-SS7	S 83°46' W	246.43'
SS7-SS5	N 23°42' W	33.36'
SS5-SS5	S 73°51' W	53.21'
SS5-N756	S 61°14' W	79.62'
N756-N519	S 49°54' W	905.90'
Y120-N522	N 34°02' E	335.65'
N522-N757	N 33°57' E	380.48'
N757-N758	N 69°32' W	289.99'
N758-N759	N 33°44' W	330.13'
N759-N760	N 55°45' E	349.05'
N760-N761	N 88°23' E	291.95'
N761-N762	S 72°02' E	300.41'
N762-N763	N 55°20' E	373.76'
N763-N764	N 17°50' W	384.33'
N764-N765	N 75°03' W	601.17'
N765-N766	N 39°14' E	696.44'
N766-N767	S 88°44' E	277.08'
N767-N768	S 21°51' E	266.29'
N768-N768A	S 31°17' E	11.59'
S768A-S768B	S 89°55' E	94.69'
S768B-S768C	N 77°33' E	105.99'
S768C-S768C	N 60°40' E	100.13'

© COPYRIGHT - 2000 BY
MORGAN C. FRANCE, L.S., P.E.
ALL RIGHTS RESERVED
SEE SHEET 5

DESIGNED BY	GRID MARGARET A. JORDAN	APPROVED BY	MORGAN C. FRANCE
DRAWN BY	SUSAN N. EVANS PERAZZO	DATE	7/10/00 at 2:15
DATE	HOOP/LE	PROJECT NO.	123\CDATA\EP\PROJECTS\DC12000\HOOP/LE4

REVISIONS	DATE	DESCRIPTION
	7/23/02	
	8/22/02	

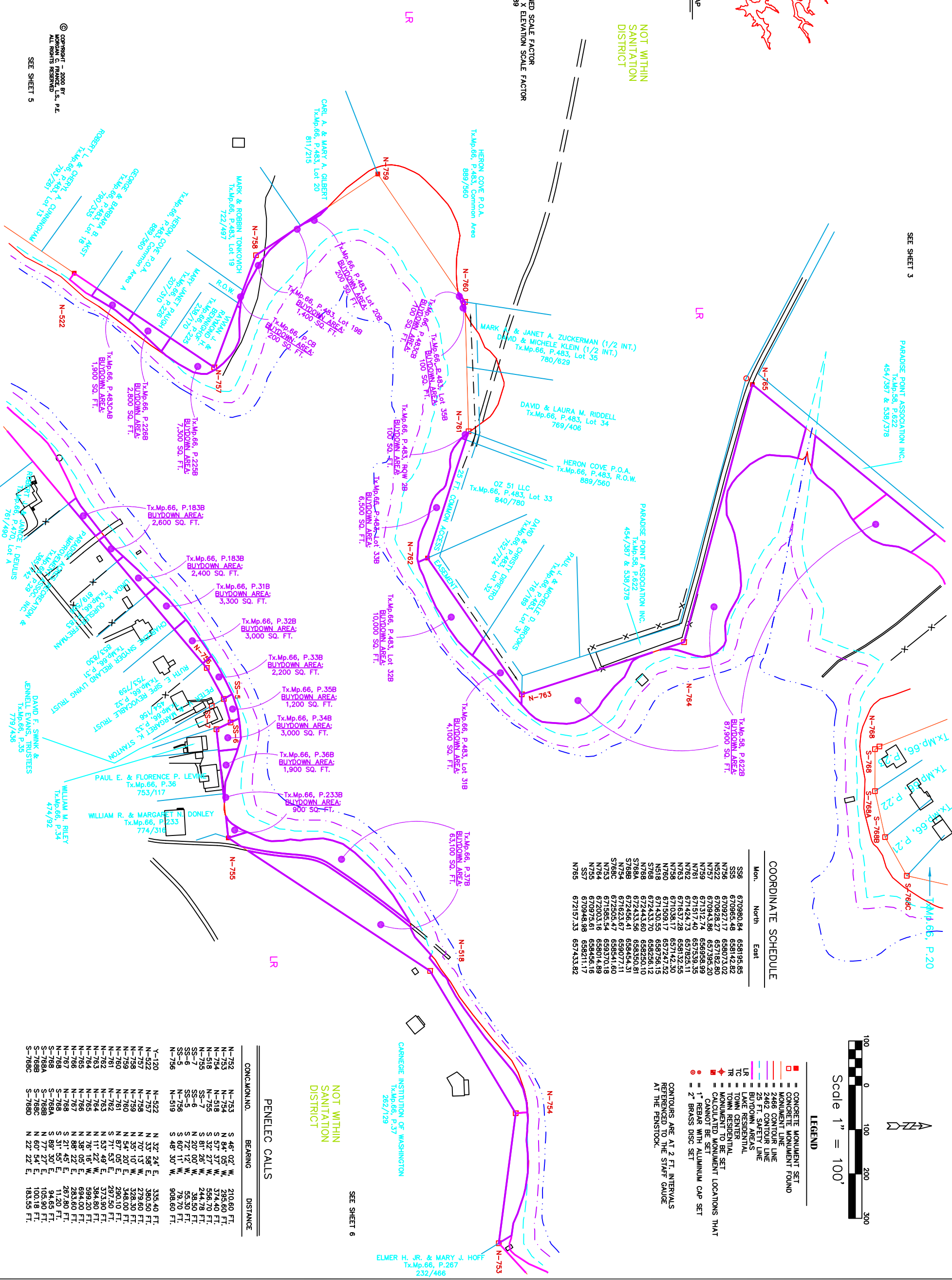
Prepared For:
DEPT. OF GEN. SERVICES - REAL ESTATE
STATE OF MARYLAND
300 West Preston Street, Room 601
Baltimore, Maryland 21201

Prepared By:
MORGAN C. FRANCE, L.S., P.E.
10 North Third Street
Odenton, Maryland 21150
(301) 334-2305

PROJECT: DEEP CREEK PROJECT
BUY DOWN SURVEY

SHEET NAME: DRAWING 4, HOOP POLE

SHEET NO.: 4



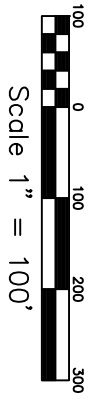
COORDINATE SCHEDULE

Mon.	North	East
SS6	670980.84	659195.85
SS5	670965.48	659142.82
N756	670927.17	659073.02
N757	670828.27	657182.80
N759	670943.86	657395.20
N761	671312.74	656958.99
N762	671517.40	657539.35
N763	671424.73	657825.11
N764	671637.28	659132.55
N765	671038.17	657142.30
N766	671430.45	657476.12
N519	671430.45	657476.12
N768	672433.70	659256.12
S768	672443.60	658250.10
S768A	672433.56	658350.81
S768B	672456.41	658454.31
N754	671623.67	659077.11
S768C	672505.47	659541.60
N753	671585.54	659370.18
N764	672003.16	659014.89
SS7	670978.91	659456.19
N765	670949.98	659211.17
N765	672197.33	657433.82

LEGEND

- CONCRETE MONUMENT SET
- MONUMENT LINE
- 2466' CONTOUR LINE
- 2462' CONTOUR LINE
- 25 FT. SAFETY LINE
- BUYDOWN AREAS
- LAKE RESIDENTIAL
- TOWN CENTER
- TOWN RESIDENTIAL
- MOBILE HOME SET
- MONUMENT LOCATION THAT CANNOT BE SET
- 1" REBAR WITH ALUMINUM CAP SET
- 2" BRASS DISC SET

CONTOURS ARE AT 2 FT. INTERVALS REFERRED TO THE STAFF GAUGE AT THE PENSTOCK.



PENELLEC CALLS

CONC.MON.NO.	BEARING	DISTANCE
N-752	N 46° 02' W	210.60 FT.
N-753	N 82° 35' W	295.54 FT.
N-754	S 58° 58' W	374.56 FT.
N-755	S 33° 24' W	544.95 FT.
N-756	S 83° 46' W	246.43 FT.
SS-6	N 23° 42' W	33.36 FT.
SS-5	S 72° 02' W	300.41 FT.
SS-4	N 55° 20' E	373.76 FT.
SS-3	N 17° 50' W	384.33 FT.
SS-2	N 75° 03' W	601.17 FT.
SS-1	N 39° 14' E	696.44 FT.
Y-120	N 32° 24' E	335.40 FT.
N-522	N 33° 57' E	380.48 FT.
N-757	N 69° 32' W	289.99 FT.
N-758	N 33° 44' W	330.13 FT.
N-759	N 55° 45' E	349.05 FT.
N-760	N 88° 23' E	291.95 FT.
N-761	S 72° 02' E	300.41 FT.
N-762	N 55° 20' E	373.76 FT.
N-763	N 17° 50' W	384.33 FT.
N-764	N 75° 03' W	601.17 FT.
N-765	N 39° 14' E	696.44 FT.
N-766	S 88° 44' E	277.08 FT.
N-767	S 21° 51' E	266.29 FT.
N-768	S 31° 17' E	11.59 FT.
N-768A	S 89° 55' E	94.65 FT.
N-768B	N 77° 33' E	105.99 FT.
N-768C	N 60° 40' E	100.13 FT.
S-768D	N 22° 22' E	183.35 FT.

NOT WITHIN
SANITATION
DISTRICT

SEE SHEET 6